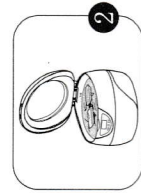
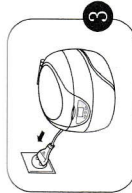


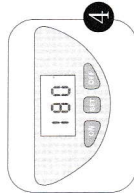
OPERATION INSTRUCTIONS



The item should be immersed well into the water. However, do not exceed the "MAX" mark.

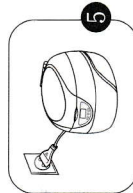


Close the lid, and plug in.



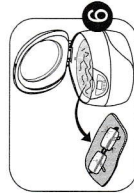
Press "SET" button to choose working cycle freely. When the unit is electrified, 180s is displayed automatically, it is the most common used working cycle. Every time press "SET" button, these optional working cycles from.

→ 180s → 280s → 380s → 480s → 90s

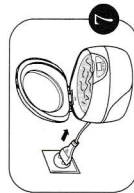


Press "ON" button to start cleaning and the red indication light is on. The time left will be displayed on the screen.

During cleaning, you can hear the "ZIZI" voice, it means the unit is working normally.



When reach the time of 000 the unit will auto stop, the red light will turn off. If another cleaning is needed, just repeat the above steps. During cleaning, if you want to stop, just press "OFF" button. Press "ON" button again, the unit will implement the remainder program to continue the cleaning. Furthermore, you can press "SET" button to renew working cycle.



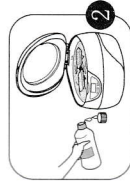
When cleaning finished, unplug it and open the lid, then take out the item. At last, pour water from stainless steel tank and wipe it up.

FOUR WAYS OF CLEANING



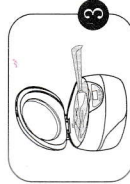
GENERAL CLEANING

Use only plain water for general cleaning. The water should merge the item but not exceed the "MAX" mark.



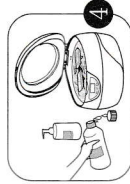
ENHANCED CLEANING

When the item is smeary or extraordinary dirty, add about 5-10 ml of detergent into water to enhance the cleaning result.



CLEANING BY PARTS

For large items, place the item as shown.



EXTENSIVE CLEANING

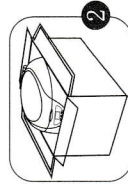
When item to be cleaned needs extensive cleaning or sterilizing, use "Enhanced Cleaning" first, then replace with clean water and add about 5-10 ml of liquid soap (used for washing hands) into the tank, and start the unit with the working cycle as 90S. After this working cycle finished, the item can be cleaned extensively.

USER MAINTENANCE



After use, pour the water and wipe up the tank and its surface.

Do not wash the unit with water to avoid electric shock.



Keep it at a cool and dry place.

