

03. Press and hold **LOCK** button for 3 seconds to activate the Childlock to lock the control panel. Its corresponding indicator will be illuminated.

- To deactivate Childlock function, press and hold **LOCK** button for 3 seconds once again.

04. Press **ANION** button once to activate Anion Mode and its corresponding indicator will be illuminated.

- Anion Mode is activated by default.
- To deactivate Anion Mode, press **ANION** button once again.

05. Press **OSCILLATION** button once to stop/station the air outlet flap oscillating at your preferred position and its corresponding indicator will stop illuminate. Press **OSCILLATION** button once again to oscillate the air outlet flap from 45° to 90° and its corresponding indicator will be illuminated once again.

- When the unit is switched off, the air outlet flap will return to the closed position.

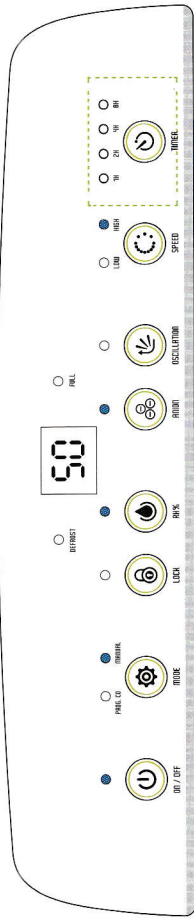
**DO NOT force open or close the oscillating air outlet flap to prevent damage to the oscillation mechanism.**

06. Press **SPEED** button consecutively to select your preferred fan speed setting (Low or High) and its corresponding indicator will be illuminated.

- At Prog CO. Mode, fan speed setting is pre-set and cannot be adjusted.

07. Press **TIMER** button consecutively to select your preferred prog. timer duration (1, 2, 4 or 8 hours).

In ON Mode, the unit can be programmed with a timer from 1, 2, 4 or 8 hours for an automatic shutoff. In Standby Mode, the unit can be programmed with a timer to start operation according to the timer set. Its corresponding indicator will be illuminated.



1-HOUR  
TIMER



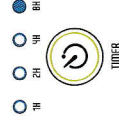
2-HOUR  
TIMER



4-HOUR  
TIMER



8-HOUR  
TIMER

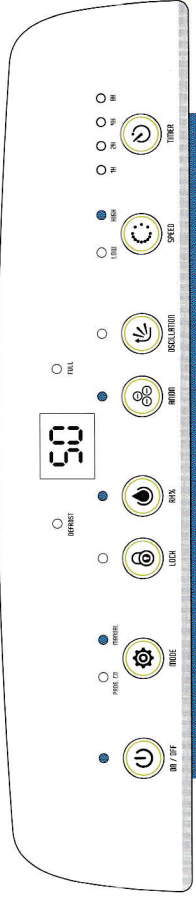


CONTINUOUS  
OPERATION

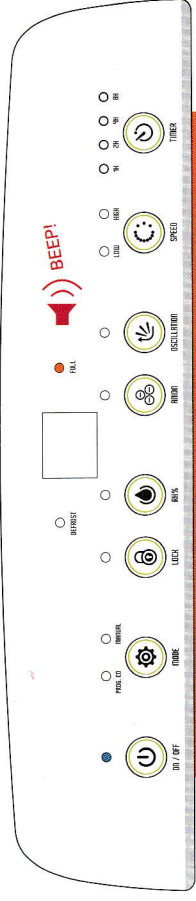


08. Blue System Operation indicator illuminates to indicate unit is in working mode. While Orange System Operation indicator illuminates to indicate, unit is under Auto Shut-Off Mode.

### WORKING MODE



### AUTO SHUT-OFF MODE

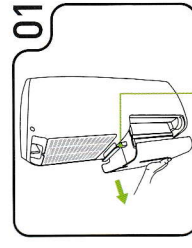


09. To turn off all the LCD Screen, Control Panel Light (Except Power ON/OFF indicator) and System Operation Indicators, press and hold both **ANION** button and **OSCILLATION** button together for 3 seconds and unit beeps once. All other functions operate as per unit's preceding setting.

- Childlock indicator illuminates when unit childlock function is activated.
- For a quick glance of the current operating setting, press any button on control panel once.
- To resume all light indicators, press and hold **ANION** and **OSCILLATION** button together for 3 seconds once again.

### Emptying the Water Tank

novita Dehumidifier ND328 shuts off automatically when the water tank is full. Follow the simple steps below to empty the water tank.



Water Tank Handle

Remove the water tank from the unit.

- The water tank handle automatically springs up when user remove the water tank from the unit.