

Water Tank
Cover



Remove the water tank cover and empty the content before placing the water tank back into the unit.

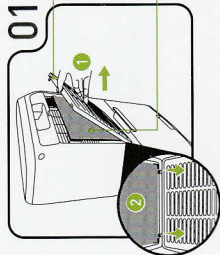
Enhanced Dual Mesh Activated Carbon Filter[®] Replacement

For an optimum HumiControl™ performance, it is recommended to replace the Enhanced Dual Mesh Activated Carbon Filter[®] once every 3 months* from initial usage.

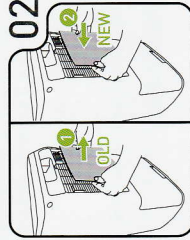
◊ Enhanced Dual Mesh Activated Carbon Filter is an optional product accessory and it is available inside the HumiControl™

Accessory Pack.

* Based on average 8 hours a day, 7 days a week usage under normal domestic indoor environment.



From the back of the unit, grasp the 2-in-1 Air Inlet Frame & Pre-Filter Screen Handle and pull it outwards to remove it from the unit.

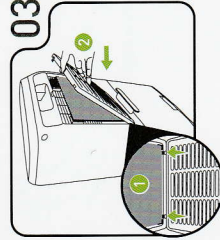


Remove the exhausted Enhanced Dual Mesh Activated Carbon Filter[®] from its designated slot. Proceed to assemble the new Enhanced Dual Mesh Activated Carbon Filter[®] into the designated slot on the unit's internal housing.

• Ensure the Enhanced Dual Mesh Activated Carbon Filter is properly assembled and installed in position before use.

• Please remove the plastic packaging on the Enhanced Dual Mesh Activated Carbon Filter before use.

• Please handle the Enhanced Dual Mesh Activated Carbon Filter with care while removing/assembling it from the unit as they are designed tight for optimum purification coverage.



Align and re-attach the 2-in-1 Air Inlet Frame & Pre-Filter Screen back onto the unit.

• DO NOT use the dehumidifier without the 2-in-1 Air Inlet Frame & Pre-Filter Screen in place.

CLEANING & MAINTENANCE

Cleaning the novita Dehumidifier

To ensure the effectiveness of the dehumidifier, it is recommended to clean & maintain the unit at least once a week.

01. Disconnect the dehumidifier from the power supply.

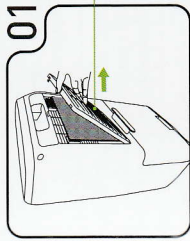
02. Use a soft cloth to gently wipe the outer case to remove dust.

03. Remove stubborn stains with a mild household cleaner.

- Please turn OFF the power supply and disconnect the power plug before cleaning and maintenance.
- DO NOT spray water directly onto the unit.

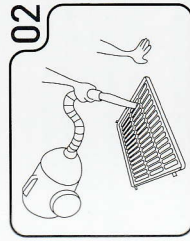
Cleaning the 2-in-1 Air Inlet Frame & Pre-Filter Screen

For optimum performance, it is recommended to clean the 2-in-1 Air Inlet Frame & Pre-Filter Screen once every two (2) weeks.

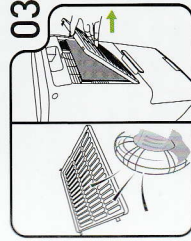


From the back of the unit, grasp the 2-in-1 Air Inlet Frame & Pre-Filter Screen Handle and pull it outwards to remove it from the unit.

2-in-1 Air Inlet Frame & Pre-Filter Screen



Use a vacuum cleaner OR a brush to remove the lint collected. Use warm soapy water to wash the 2-in-1 Air Inlet Frame & Pre-Filter Screen if required.



Air dry it then align and re-attach the 2-in-1 Air Inlet Frame & Pre-Filter Screen back onto the unit.

- DO NOT use the dehumidifier without the 2-in-1 Air Inlet Frame & Pre-Filter Screen in place.